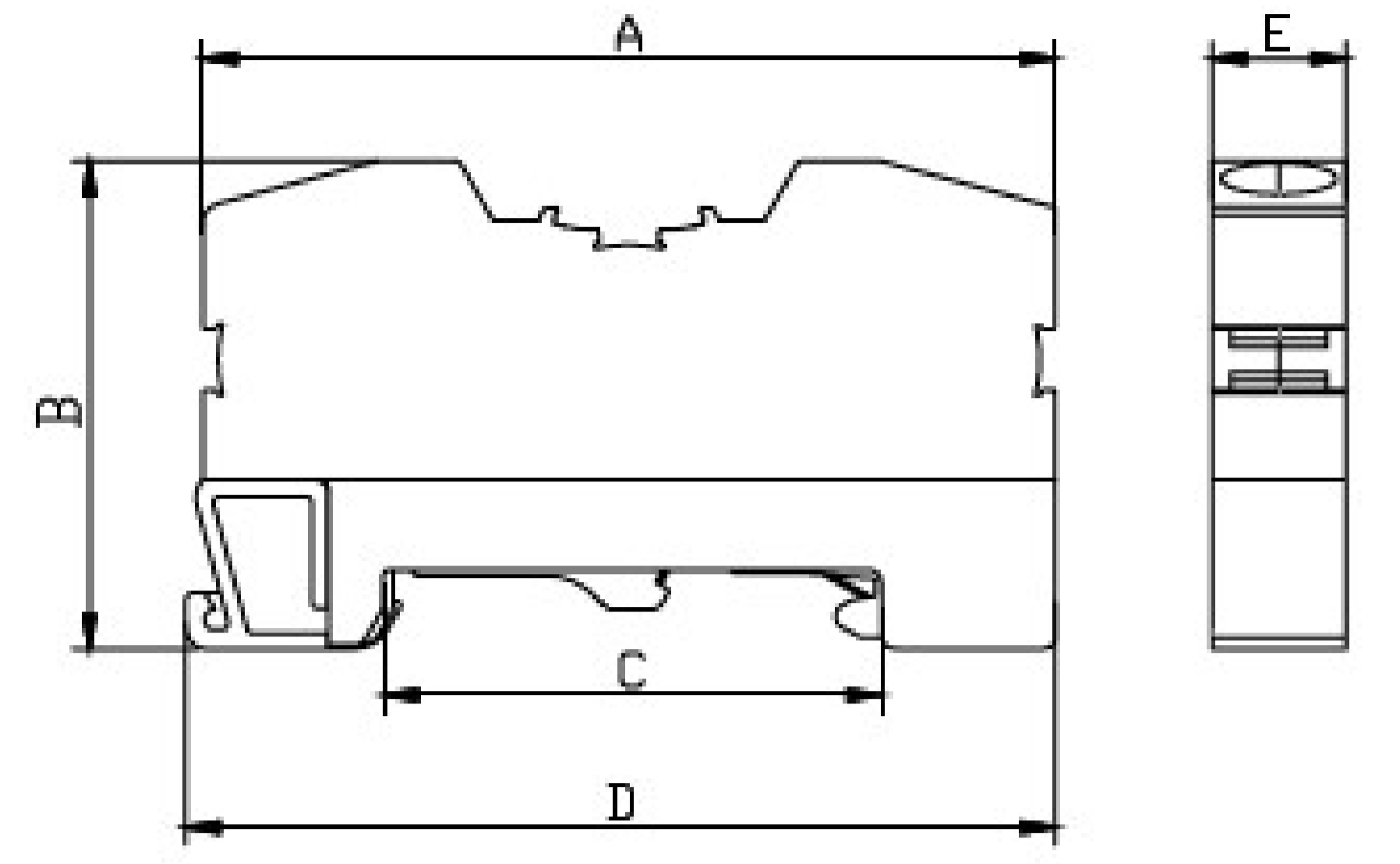


OPK-T 10mm² PUSH-IN GROUND TERMINAL BLOCK

Product code:

Product code: 1200



<https://onka.com.tr/opk-t-10mm2-push-in-ground-terminal-block>

Dimensions

Dimensions	
Dimensions (mm)	
A	62.5
B	36.5
C	34.5
D	64.5
E	10

Materials

Body	PA6.6
Bridge	Copper
Orange button	PA6.6
Spring	Stainless Steel
The Leg which contact to the Din Rail	Brass
Temperature	-40°C,+140°C
Cable Strip L.	12mm
Data	TSE/CE
Voltage	750V
Section	10mm ²
Norm	EN-60947-7-1
Pcs	100

Stopper

Stopper-1202,1212,1222

Sticker

Group Sticker-1232

Marking

Marking-9770/2630/4442/9540/7301