

Technical Data Sheet

Date: 03/11/2022

5x16A CEE N. Angled Panel Mount Socket

Ref. No: 3122-309-1600



Pack Unit
10



Weight
212 gr.

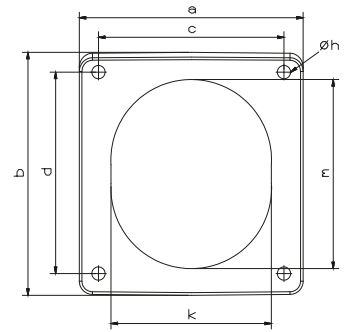
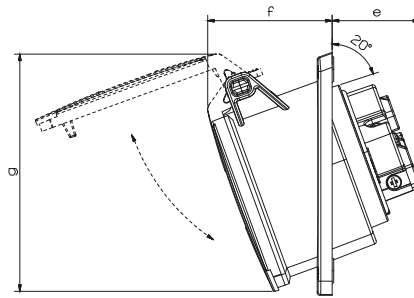


Technical Informations

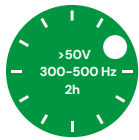
Ampere	16A
Voltage	380 - 415 V. AC
Hertz	50 - 60 Hz
Protection Class	IP 44
Clock Postion	6h
Number Of Poles	5 (3P + N + E)
Contact Material	Brass (CuZn)
Housing Material	PA6
Connection Type	Screw
Operation Temp. (-25 / + 40 IEC 60309)	-25 / +80 (1 hour -100° C)

Dimensions

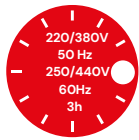
a	83	e	41
b	90	f	51
c	70	g	100
d	76	Øh	5
Cable Diameter(Min.)	2,5 mm ²	k	72
Cable Diameter(Max.)	10 mm ²	m	82



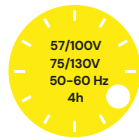
Different Earth Contact Positions (Clock Positions)



3107-309-1100-2h



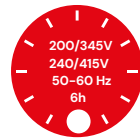
3107-309-1600-3h



3107-309-0700-4h



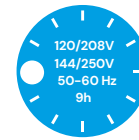
3107-309-0300-5h



3107-309-1600



3107-309-0300-7h



3107-309-0900-9h



3107-309-1600-11h



Tel: +90 232 880 90 01
Fax: +90 232 880 90 02



info@tpelectric.com.tr



Kemalpaşa O.S.B. 600 Sk. No:364
35730 Kemalpaşa - İZMİR / TÜRKİYE