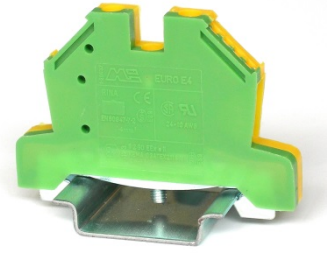
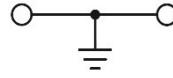




EURO E4

Article: **43454TT**



Earth Terminal Block - yellowgreen
Screw connection - 4mm² / 10AWG - Width 7 mm



Script@

GENERAL DATA

Series	EURO E4
Item	43454TT
Weight/Piece	18,0 g
Catalog	01
Customs tariff	85369095
Colour	YellowGreen
Q.ty p.pck.	50
Q.ty p. box	1000

TECHNICAL DATA / DIMENSIONS

Dimensions

Width mm	7
Length mm	58
Height mm	36
Mounting type (EN 60715)	Omega TH35

Technical data

Maximum load current	-
Insulating material	PA
Self-extinguishing degree acc. to UL94	V0
Rated surge voltage	6kV
Pollution degree	3
Surge voltage category	III
Insulating material group	I
Nominal Voltage	-
Nominal Current	-
Temperature index, insulating material – Elec. UL 746 B - RTI	130°C
Static insulating material lower permissible temperature	-60°C

Connection data

Conductor cross-section solid min/max	0.5 / 6 mm ²
Conductor cross-section stranded min/max	0.5 / 4 mm ²



AWG min/max	24-10 AWG
Max conductor cross-section stranded with ferrule with plastic sleeve	4 mm ² / L=12 mm
Stripping length	max 10 mm
Screw	M3 – Zinc plated steel
Tightening torque	0,6Nm / 7 Lbln.
Earth Screw	M3,5 – Zinc plated steel
Tightening torque	0.6Nm / 7 Lbln.
Clamp	Zinc plated steel
Metal part	Zinc plated steel

APPROVALS



EN 60947-7-2

4mm²

EN 60068-2-11

Salt mist test for 96 hours

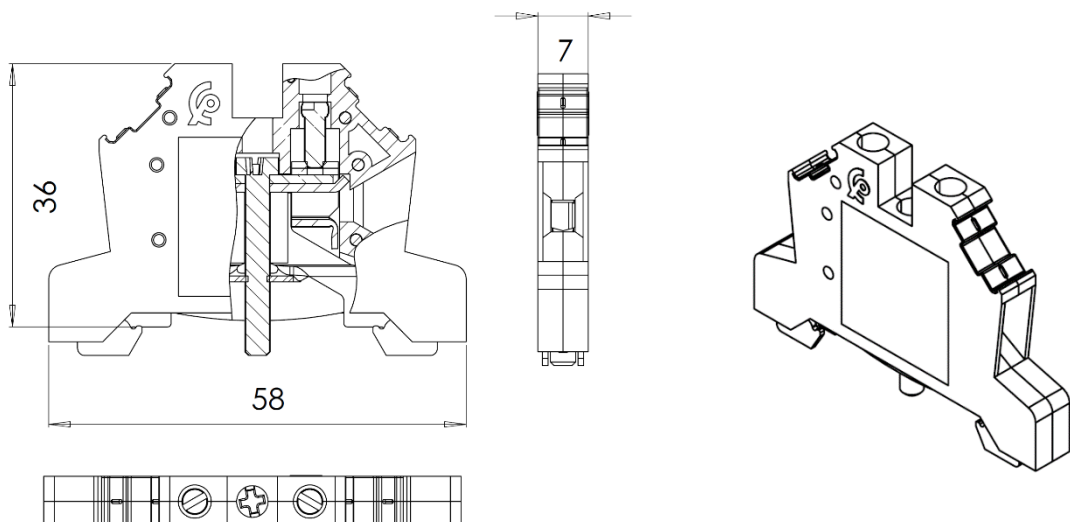
ENEL DV27



AWG 24-10

TECHNICAL DRAWINGS

00





ACCESSORIES

Marking

Item	Description
438MFC0612TB	Tags 6x12 for MI Series and 438MWK0512TBA (39tags x 20cards)

DIN RAIL system - Mounting and Installation material

Item	Description
43910	Steel Omega rail TH35/7,5mm - 2mt length
43910/F	Slotted steel Omega rail TH35/7,5mm - 2mt length
43911	Steel Omega rail TH35/15mm - 2mt length
43911/F	Slotted steel Omega rail TH35/15mm - 2mt length
43028	Angled support bracket
43442	EURO STOP – End bracket width 9
43444	EURO STOP – End bracket width 6
43447	EURO STOP – Snap-on end bracket width 6
43448	EURO STOP – Tag Carrier for TH35 or TH15 DinRail