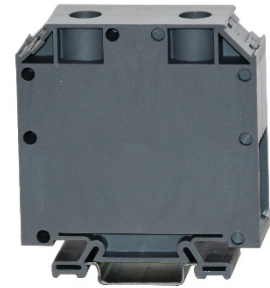




# EURO 95

Article: **43426**



Feed-through terminal block - Grey  
Screw connection - 95mm<sup>2</sup> / 3/0AWG - Width 26 mm



## GENERAL DATA

Series	<b>EURO 95</b>
Item	<b>43426</b>
Weight/Piece	<b>174 g</b>
Catalog	<b>01</b>
Customs tariff	<b>85369010</b>
Colour	<b>Grey</b>
Q.ty p.pck.	<b>10</b>
Q.ty p. box	<b>160</b>

## TECHNICAL DATA / DIMENSIONS

### Dimensions

Width mm	26 mm
Length mm	74 mm
Height mm	75 mm
Mounting type (EN 60715)	Omega TH35

### Technical data

Maximum load current	232A
Insulating material	PA
Self-extinguishing degree acc. to UL94	V0
Rated surge voltage	8kV
Pollution degree	3
Surge voltage category	III
Insulating material group	II
Nominal Voltage	800V
Nominal Current	232A
Temperature index, insulating material – Elec. UL 746 B - RTI	130°C
Static insulating material lower permissible temperature	-60°C

### Connection data

Conductor cross-section solid min/max	35 / 95 mm <sup>2</sup>
Conductor cross-section stranded min/max	35 / 95 mm <sup>2</sup>



AWG min/max	4-3/0 AWG
Max conductor cross-section stranded with ferrule with plastic sleeve DIN 46228/4	-
Stripping length	max 20mm
Screw	M8 – recessed hexagon – Ch 6 – Zinc plated steel
Tightening torque	4,5Nm / 40 Lb-In
Clamp	Zinc plated steel
Current bar	Tin Plated copper alloy

## APPROVALS

### IMQ



**EN60947-7-1**      95mm<sup>2</sup> – 800V – 232A – 2,5 Nm  
**EN60068-2-11**      Salt mist test for 96 hours

### ENEL DV27



**UL1059**  
 E203985

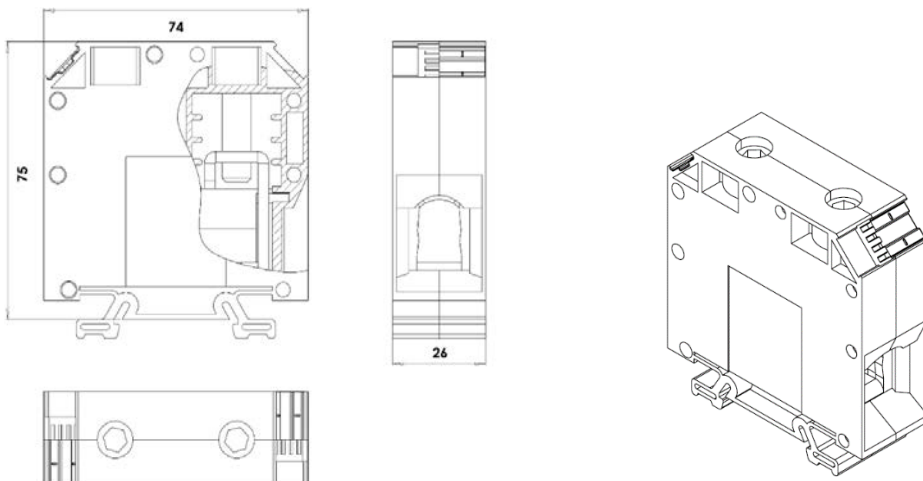
*Not suitable for Compact Stranded*

AWG 4-3/0 – 600V – 185A – 40 Lb-In

**SCCR**      100kA

See: <https://iq.ulprospector.com/en/profile?e=167250>

## TECHNICAL DRAWINGS





## ACCESSORIES

### Marking

Item	Description
<b>43059</b>	Single-digit marking tag (5 x 3 mm) – white
<b>43060/0 ÷ 43060/9</b>	Single-digit marking tag (5 x 3 mm) – with marking: 0 ÷ 9
<b>43060/A ÷ 43060/Z</b>	Single-digit marking tag (5 x 3 mm) – with marking: A ÷ Z
<b>43094</b>	Marking tag adapter – 6 slots for marking tags
<b>43192</b>	Marking tags (5 x 12 mm) - white (special marking on request)
<b>43196</b>	Marking tags (6 x 12 mm) - white (special marking on request)
<b>438MFC0812TB</b>	Tags 8x12 for MI and 438MWK0512TBA (27tags x 20cards)
<b>438MFC0612TB</b>	Tags 6x12 for MI and 438MWK0512TBA (39tags x 20cards)
<b>438MFC0512TB</b>	Tags 5x12 for MI and 438MWK0512TBA (45tags x 20cards)

### DIN RAIL system - Mounting and Installation material

Item	Description
<b>43910</b>	Steel Omega rail 35/7,5mm - 2mt length
<b>43910/F</b>	Slotted steel Omega rail 35/7,5mm - 2mt length
<b>43911</b>	Steel Omega rail 35/15mm - 2mt length
<b>43911/F</b>	Slotted steel Omega rail 35/15mm - 2mt length
<b>43028</b>	Angled support bracket
<b>43442</b>	EURO STOP - End bracket width 9
<b>43444</b>	EURO STOP - End bracket width 6
<b>43447</b>	EURO STOP - Snap-on end bracket width 6
<b>43448</b>	EURO STOP – Tag Carrier for TH35 or TH15 DinRail
<b>43449</b>	EURO STOP - End bracket cover profile carrier
<b>43449-C</b>	EURO STOP - Cover profile - Length 100cm