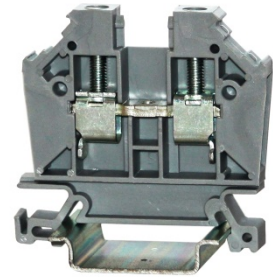




EURO 6

Article: **43401TT**

Feed-through terminal block - grey
Screw connection - 6mm² / 8AWG - Width 7 mm



Script@

GENERAL DATA

Series	EURO 6
Item	43401TT
Weight/Piece	13,6 g
Catalog	01
Customs tariff	85369095
Colour	Grey
Q.ty p.pck.	50
Q.ty p. box	1.000

TECHNICAL DATA / DIMENSIONS

Dimensions

Width mm	7 mm
Length mm	50 mm
Height mm	44 mm
Mounting type (EN 60715)	Omega TH35

Technical data

Maximum load current	50A
Insulating material	PA
Self-extinguishing degree acc. to UL94	V0
Rated surge voltage	8kV
Pollution degree	3
Surge voltage category	III
Insulating material group	I
Nominal Voltage	1000V
Nominal Current	41A
Temperature index, insulating material – Elec. UL 746 B - RTI	130°C
Static insulating material lower permissible temperature	-60°C

Connection data

Conductor cross-section solid min/max	0.50 / 10 mm ²
Conductor cross-section stranded min/max	0.50 / 6 mm ²



AWG min/max	22-8AWG
Max conductor cross-section stranded with ferrule with plastic sleeve DIN 46228/4	6 mm ² / L=18
Stripping length	max 12 mm / 0.475in
Screw	M3,5 – Zinc plated steel
Tightening torque	0,8Nm / 10 Lb-In
Clamp	Zinc plated steel
Current bar	Tin Plated copper alloy

APPROVALS



40016498



REG B573

EN60947-7-16mm² – 1000V – 41A**EN60068-2-11**

Salt mist test for 96 hours

ENEL DV27**UL1059**

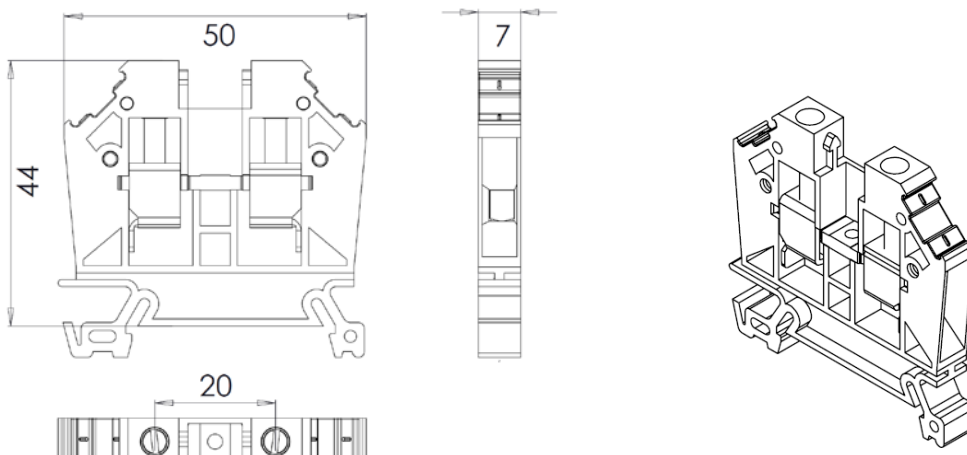
E203985

Not suitable for Compact Stranded

AWG 22-8 – 600V – 50A

SCCR 100kASee: <https://iq.ulprospector.com/en/profile?e=167250>

TECHNICAL DRAWINGS





ACCESSORIES

Marking

Item	Description
438MFC0612TB	Tags 6x12 for MI and 438MWK0512TBA (1box=780pcs)

DIN RAIL system - Mounting and Installation material

Item	Description
43910	Steel Omega rail 35/7,5mm - 2mt length
43910/F	Slotted steel Omega rail 35/7,5mm - 2mt length
43911	Steel Omega rail 35/15mm - 2mt length
43911/F	Slotted steel Omega rail 35/15mm - 2mt length
43028	Angled support bracket
43442	EURO STOP - End bracket width 9
43444	EURO STOP - End bracket width 6
43447	EURO STOP - Snap-on end bracket width 6
43448	EURO STOP – Tag Carrier for TH35 or TH15 DinRail
43449	EURO STOP - End bracket cover profile carrier
43449-C	EURO STOP - Cover profile - Length 100cm

Additional items

Item	Description
43011	End plate
43016	Separator
43031	Cover for EURO 6 - 10
43621/02	Insulated 2 poles screw-jumper -pitch 7,1mm -6mm2 1bag=50pcs
43621/03	Insulated 3 poles screw-jumper -pitch 7,1mm -6mm2 1bag=50pcs
43621/24	Insulated 24 poles screw-jumper-pitch 7,1mm-6mm2-(1box=5pcs) - (5_jumpers + 120_screws + 10_insulating body)